

DrySyn Reflux Manifold

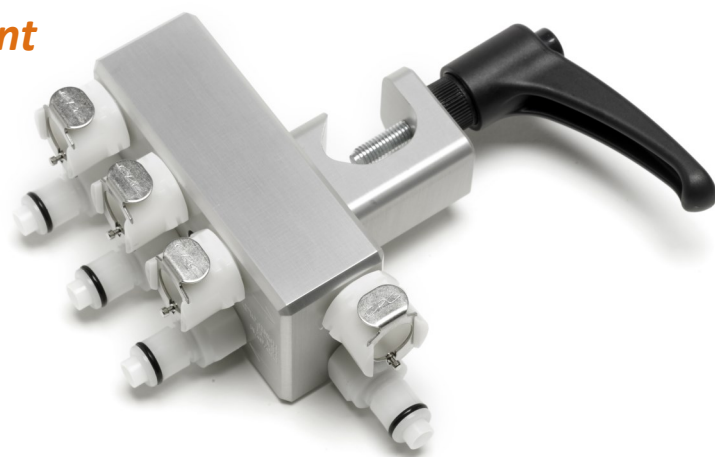
Maximise your fume cupboard coolant

Convert a single coolant source into three condensing streams and into one drain.

The DrySyn Reflux Manifold avoids daisy-chaining multiple condensers, keeping everything tidy and safe.

Quick release connectors enable rapid reaction set up / dismantling and form a seal on both sides when removing condenser tubing, diverting the coolant flow to the other connected condensers thus avoiding leaks.

The unit is designed to be clamped to fume hood scaffolding and will keep condenser tubing safely out of the way when not in use. It can be rotated through 90 degrees to allow vertical or horizontal



- Simple to set up & clean.
- Maximum rated pressure for the fittings supplied is 8.3 bar, with most water supplies at only a maximum of 3 bar.
- No hazardous “daisy chaining”.
- Sealed connectors so no more leaks.
- Save water with only one supply necessary.



Popular purchase options

ADS3-WM: DrySyn Reflux Manifold

Manifold only (no fittings)

ADS3-WM-F/14: DrySyn Reflux Manifold fittings

for 1/4" ID (6.4 mm) tubing

ADS3-WM-F5/16: DrySyn Reflux Manifold fittings

for 5/16" ID (7.9 mm) tubing

ADS3-WM-F3/8: DrySyn Reflux Manifold fittings

for 3/8" ID (9.5 mm) tubing.

Contact us for further information!